



BROWNS
TIMBER BUILDINGS

Transforming Education with
Purpose Built Spaces:
Blackrod Primary Case Study



brownstimmerbuildings.com

sales@brownstimmerbuildings.com



TABLE OF CONTENTS

Designing, manufacturing and installing purpose built educational spaces.

Consider one of our turn-key insulated, low-cost, and sustainable buildings – suitable as classrooms, sports halls, auditoriums, dining facilities, religious area, break out space, after school clubs and everything in-between. Minimal disruption to learning, with free delivery and installation within 3 weeks from initial order.



Cover Page	01
Table of Contents	02
About Us	03
The Project	04
Delivery & Completion	05
The Product	06
Testimonial	07
Contact Us	08

ABOUT US

A bit about **Browns Timber Buildings** and our journey.

Browns Timber Buildings, also known as Browns Garden Buildings, was founded on 2006 by its co-owners Chris & Sue Brown. After 18 years running the existing concrete garage business, it was time to move the design and concepts used in the sectional concrete building industry into timber buildings.

In October 2017, we moved to our current factory in Manchester, which has allowed us to develop and improve our range of building products with new modern, contemporary manufacturing processes and designs.

We have continued to grow our business, driven by the need to work from home and the reinvention of our bespoke timber spaces. We have also forged a relationship with The Green House People who have 36 show sites in garden centres, including Dobbies, all over the country, selling timber buildings from different manufacturers. We are confident in our buildings and always aim to exceed expectations; and always receive great feedback.

Our five-star Google reviews demonstrate our continued commitment to providing a high quality of service from design through to handover.

All the timber we use is from a certified responsible source and has been carefully chosen by our timber importer to offer the highest quality and finish. This, combined with our innovative design and use of modern roofing materials, doors, and windows, ensures Browns Timber Buildings' products will enhance the use and appearance of your space.

Our aim is to build on the tradition of quality and design brought through four generations of building knowledge. Our future depends on continued innovation "By Design", and in offering a unique bespoke design service alongside a range of quality modular buildings.

We have become FSC® certified to allow for the supply of responsibly sourced timber in all our buildings, as well as being carbon neutral.



Nathan Winch
Managing Director



Debra Hart
Commercial Director



Chris Carter
General Manager



Joe Hobson
Joiner



Alex Spencer
Joiner



Ben Ascroft
Joiner

THE PROJECT

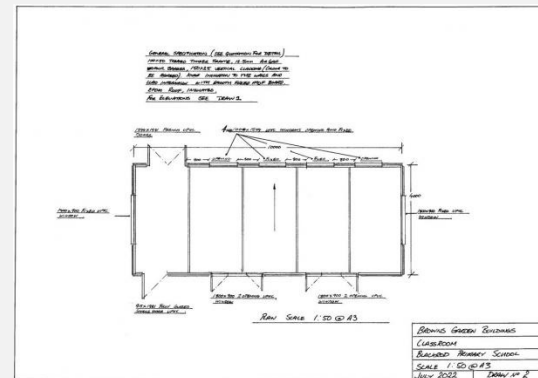
Blackrod Primary School, 371 Manchester Road, Bolton BL6 5SY

Blackrod Primary School in Bolton were looking for a solution to their space limitations. With a thriving after-school demand, they wanted to create additional space that could be used during and outside of school hours.

Browns Timber Buildings developed a plan, to accommodate up to an additional 30 students, as well as helping garner support from local stakeholders such as the council.

Approval for the new building:

<https://www.theboltonnews.co.uk/news/23233093.bolton-blackrod-primary-gets-new-building-approved/>



Understand the brief

Browns Timber Buildings worked with the school to develop out a strategy for a bespoke, purpose-built space.



Build and deliver



DELIVERY & COMPLETION

Browns Timber Buildings worked to budget and kept within the scope timescale to deliver the build, from manufacture in the factory in Horwich, through to delivery and installation on site in the school grounds, whilst minimising disruption to the learning environment.

Working closely with the estates and business management teams, the project delivered – resolving any issues along the way to the full satisfaction of the staff, school and the council stakeholders.



Understand the brief

Browns Timber Buildings worked with the school to develop out a strategy for a bespoke, purpose-built space.



Build and deliver

The company then worked with the school to plan around their timetable to deliver and install the building.

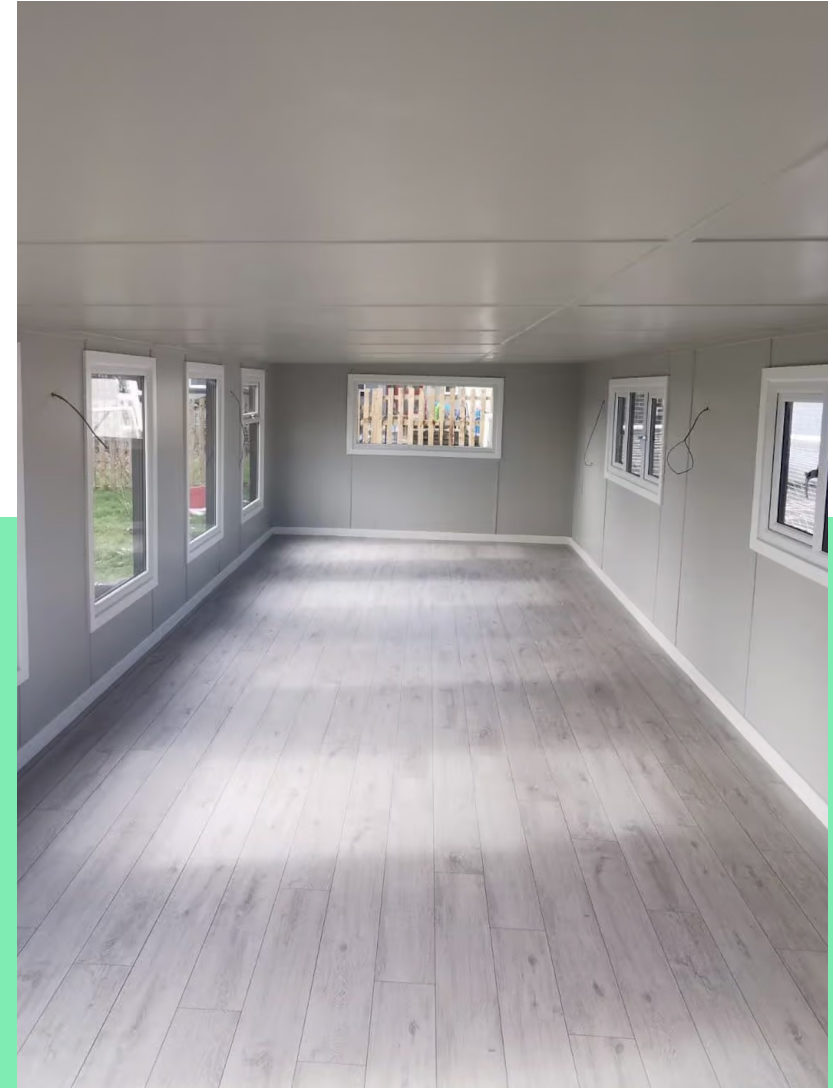


BROWNS
TIMBER BUILDINGS

THE PRODUCT

Blackrod Primary School

Purpose-built outdoor educational after-school space for up to 30 students



We are proud to have been part of this transformative project at Blackrod Primary School, and we look forward to helping more education institutions create bespoke spaces that elevate the learning experience.



SUPPORT FROM THE COUNCIL

Councillor David Grant, who also chairs the Children's Service Scrutiny Committee, said

"I whole-heartedly support this, the morning and after school club at Blackrod Primary School is hugely popular."

"The addition and extension of this facility or the facilities that they offer may in fact alleviate some of the parking issues that we're having as well."

"So I would therefore move approval."

The new building was constructed within the grounds of the existing school and Bolton Council officials confirmed that no objections had been received either from Blackrod residents or from any official bodies prior to commencement.

These including Environmental Health, Highways Engineering and Sport England who all reported no objections to the scheme and its proposals.

The build was started and completed within 3 weeks.

Source: <https://www.theboltonnews.co.uk/news/23233093.bolton-blackrod-primary-gets-new-building-approved/>



Cllr David Grant

Chair, Children's Service Scrutiny Committee



BROWNS
TIMBER BUILDINGS



BROWNS
TIMBER BUILDINGS

Get in touch for a **friendly, no obligation** chat today.



Contact us

sales@brownstimberbuildings.com

01204 784040

